



Leather Goods & Shoe Finishing

Catalogue



UNITERS PRO

 **Leather
MASTER**[®]
Developed by Dr. *TORK*

Index



Introduction		5
ISO certifications		6
Research		7
Ep colour laboratory		8
Products for the leather goods and shoe finishing market		9
Consumer products	UNIVERSAL CLEANER	10
	RAPID CLEANER S	10
	LEATHER PROTECTION CREAM	10
	LEATHER CLEANING WIPE	11
	LEATHER PROTECTING & REVITALISING WIPE	11
	LIGHT COLORED LEATHER CARE	11
	WAX ON	12
	OLEOSA	12
	NUBUCK CLEANING KIT	12
	NUBUCK ECO PROTECTOR	13
	REPTILUX KIT	13
	NUBUCK CLEANING CLOTH	13
Graphic department		14
Production products	EP 1000 SERIES GLOSS	15
	EP 2000 SERIES MATT	16
	EP 5000 SERIES MATT	17
	EP METALLIC	18
	EP FLUO	19
	EP REFLEX	20
Edge Paint Auxiliaries	EP FILLER	21
	EP SEALER	22
	PU FIBRE GLUE	23
	EP PASTE	24
	EP ANTIFOAM	25
	EP THICKENER	26
	EP THINNER	27
UnitersPro Colour Systems		28



Creams	SHINE	30
	S-CREAM	31
	L-CREAM	32
	TOP CREAM	33
	BRIGHT NOW	34
	IDROGREASE & IDROGREASE PASTE	35
Dressing	FIX 181	36
	SPONGE DRESSING	37
	SPRAY DRESSING	38
Water proofing agents	FLO1	39
	FLO3	40
	PROTECTOR W CONC.	41
Cleaners	CLEANER 333	42
	RAPID CLEANER S	43
	SHINE	44
	MOULD REMOVER	45
	ANTI MOULD RTU	46
	SPEW REMOVER	47
	NUBUCK CLEANING CLOTH	48
Removers	DEGREASER	49
	GLUE REMOVER	50
	SUPER REMOVER & SUPER REMOVER GEL	51
	INK AWAY	52
	COLOUR TRANSFER REMOVER	53
	LEATHER ODOUR REMOVER	54
Auxiliaries	ENZIMATIC ODOUR REMOVER	55
	LEATHER SOFTENER	56
	REPTILUX & REPTILUX SPRAY	57
	LEATHER PROTECTION CREAM	58
	OLEOSA	59
	WAX ON	60
	FILLER	61
	TOUCH-UP PAINT	62
	COLOUR LINE ANILINE	63
	COLOUR LINE ANILINE NO BRONZE	64
	A-COLOUR	65
	FIX-A	66
	LEATHER GOODS REPAIRS	67
SHERLOCK SYSTEM	68	

UNITERS S.P.A.

Introduction

- Italian company, founded in 1987.
- Produces leather, fabric, wood, car and aviation care, cleaning and repair products
- Based in Arzignano area - largest tannery concentration worldwide
- ISO 9001 certified since 1998
- ISO 14001 certified since 2004
- OHSAS certified since 2005
- Ethical Work Practice Certification
- Own Research & Development Centre headed by Dr. Leo Tork
- Active in:
 - Furniture Market
 - Leather Goods & Footwear Market
 - Motor CycleWear Market
 - Automotive Market
 - Aviation Market
 - Nautical Market
 - Tanneries
- Sales in 82 countries
- Runs Call Centers Sells Customer Service, Repair service and Extended Warranties in multiple markets for Italian, Dutch, UK, Belgian, Spanish, Portuguese, North American, Australian, Singaporean, Japanese, and Swiss Markets



Mission Statement

The Uniters Groups' aim is to supply you with technologically innovative, time saving and efficient products in observation with the most rigid environmental rules.

Service, Style, Speed and Satisfaction are the four S's we stand for.



This is our very well recognized trade mark for consumer leather care products.

The Trade Mark, registered in 1988, has been used on products used by tanneries, manufacturers, retailers, service technicians and consumers on 5 continents.



A professional product line for producing and repairing leather and leather goods.

Consists of Edge Paint, Colours, Cleaners, Finishes, Primers, Glues, Fillers and many more.

ISO Certifications

ISO 9001 Quality Management System

Uniters S.p.A. is producing under the ISO 9001 Quality Management System since the year 2000. It has been one of the first care product companies to achieve and maintain the certifications up to today. This means that every employee of the company is doing his or her work according to specific and strict standards with respect to quality. All our suppliers are - requested to respect the same standards.

ISO 14001 Environmental Quality System

The environment is a precious good that Uniters intends to preserve where it cans. Therefore, since 2004, Uniters is 14001 certified.

OHSAS 18001 Health and Safety Certification

A company is made of people and Uniters cares for people. The OHSAS certification awarded since 2005, sets out specific

and strict rules concerning the safety at the work place. Safety, solvent use and handling of goods are monitored closely to the benefit of the health and safety of who works at Uniters S.p.A.

Our Ethical Work Practice Certification

The adoption of the ETI Base Code guarantees that companies take responsibility for an ethical approach in their purchasing policies.

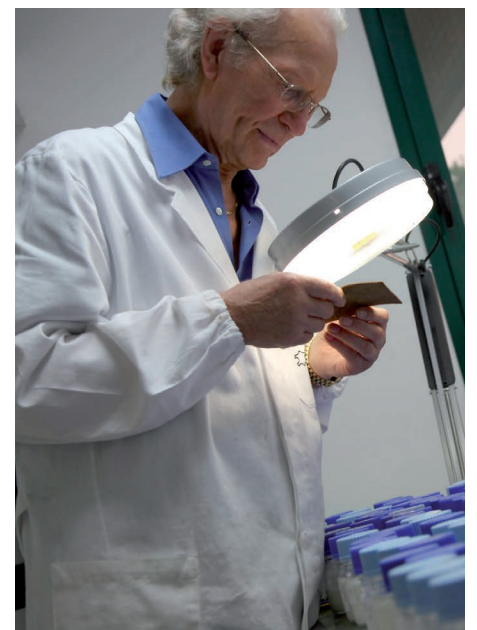


Research



The Research Centre is the heart of Uniter.

The Research Centre is the place where thought and reflection merge with machinery and technology to create innovative solutions.



Dr. Leo Tork
Founder of the Uniter Global R & D Facility

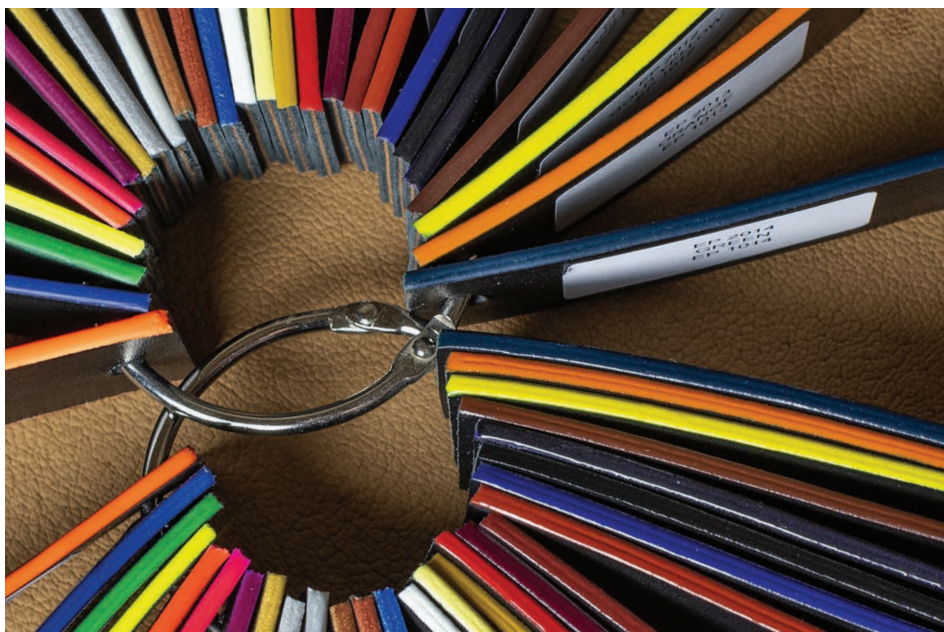
Ep colour laboratory

Customised colours

An high-tech laboratory dedicated to the development and production of customised colours.

The laboratory uses innovative machinery for the colour preparation, managed by experienced staff able to develop custom colours from the Edge Paint series and Touch-up paint series and for fashion effects from the A-COLOUR series.

The Colour Laboratory is equipped to provide solutions to problems or development requests of new finishes for the footwear, clothing and leather goods sector.



Products for the leather goods and shoe finishing market

We have organized our products into 3 categories:

Consumer products

Uniters has been offering since its' early beginnings demonstrable efficient consumer products that are fool proof, easy to use and where possible water based.

Production products

Uniters produces a full range of professional products for leather goods production: edge paint, finishes, creams, protection products.

After sales service and products

Who works with leather will encounter problems either at production level or at consumer level. Uniters has developed a full product line with problem solving solutions to keep your goods from returning to the factory.

Uniters has several repair centres around the world to assist you locally.



Consumer Products

Universal Cleaner



Universal cleaner is a very effective detergent for cleaning upholstered leather like that of living rooms, car seats, boats and airplanes.

It can also be used on leather goods with resistant colours, such as shoes and bags. Liquid or wet wipes are available.

Size: 200 ml
1L



Rapid Cleaner S



Rapid cleaner S is a concentrated cleaner for pigmented leathers. Do not use on Aniline leather, nubuck or suede. This product comes with a foam pump.

Size: 200 ml



Leather Protection Cream



Leather Protection Cream is a water based product that gently protects aniline and pigmented leather against oil, water and alcohol based stains. It will also keep your leather lovely and soft, and when used regularly prevents pigmented leather from cracking due to excessive dryness.

Size: 100 ml



Consumer Products

Soft Cleaner



Leather Cleaning Wipe

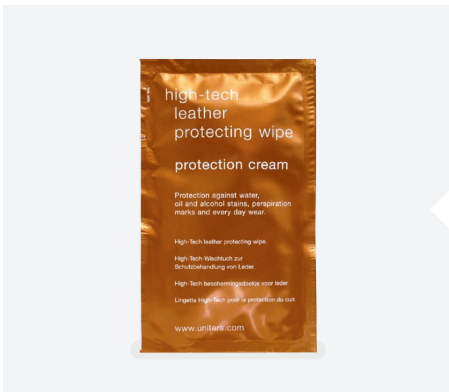
Soft Cleaner contains a delicate detergent that does not alter the original properties of your leather or its finish. It can be used on all types of leather. **Soft Cleaner** is especially suitable for cleaning leather goods.

Size: Wipe Single Sachet

Available in English, Italian, German, Dutch, French.



Protection Cream



Leather Protecting & Revitalising Wipe

Protection Cream provides excellent protection against water, oil and alcohol stains for aniline and dyed leathers. It protects leather against everyday soiling, perspiration and greasy skin marks. **Protection Cream** is not suitable for nubuck and suede.

Size: Wipe Single Sachet

Available in English, Italian, German, Dutch, French.

Light Colored Leather Care



The kit contains all the products needed to remove and prevent blue jeans or other colour transfer on to light coloured leather and leather like materials.

Contents

- 225 ml Leather Barrier
Recycled HDPE bottle - childproof cap
- 225 ml Leather Cleaner
Recycled HDPE bottle - childproof cap
- 125 ml Color Transfer Remover
Recycled HDPE bottle - childproof cap
- 1 application cloth
- 1 cleaning sponge

Consumer Products

Wax On



Product to revive wax pull ups

Wax On is a water-based product that when applied on waxy pull up leather it restores the normal softness, transparency and look on these types of leather. It can be applied by cotton cloth to remove scratches and lightened areas during the production.

Size: 100 ml



Oleosa Cream



Product to revive oil pull up leathers

Oleosa is a waterproof fatliquoring product that can be applied using a sponge or a spray gun. As well as giving the leather a soft, oily touch it also provides the leather with an excellent waterproofing effect. Designed to be used on oiled or pull-up leathers to uniform the colour, improve the softness, renew an oily touch and also remove scratches and lightened areas during the production.

Size: 100 ml

Nubuck Cleaning Kit



Specially designed to clean and revitalize your Nubuck leathers.

Contents

140 ml Nubuck Cleaner
PETG bottle - childproof cap

2 Nubuck Cleaning Cloths

2 cleaning sponges

1 instructions and care tips booklet
in 8 languages

Consumer Products

Nubuck Eco Protector



Nubuck Eco Protector protects nubuck, suede and aniline, against food and drink stains and general soiling. It also provides an oil, water and alcohol repellency.

Size: 500 ml



Reptilux Kit



Specially designed care cream for crocodile, snake, reptile leather or other high-gloss leathers.

Contents

- 1 Relux 50ml tube - screw top cap
- 2 soft cloths
- 1 instructions booklet

Nubuck Cleaning Cloth



Nubuck Cleaning Cloth is a gum treated cloth that captures dust and dry soiling. It is gently abrasive without removing fibres. The abrasive action gives back nubucks' velvet nap and restores eventual flattened dark areas.

Size: sachet 1 pc
sachet 2 pc

Our team of graphic designers are ready to process any request for custom box designs, labels and leaflets.



Hermes



Relux Care kit



Delvaux



Joop



Roots



Burberry



Lancaster



Furla



Coccinelle



Radley

Production Products

Edge Paint Series

EP 1000 Series Gloss



PU based Glossy Edge Paint

EP 1000 are water based **Glossy** edge paints designed to colour raw edges of belts, bags, wallets and shoes. The high quality of the raw materials and resins ensure high performances in terms of wet and dry rub-fastness and flexibility from -25°C to +55°C. The EP 1000 can be applied by machine or by hand in one or more coatings without any adhesion problems. The edges will be glossy, round and full with a smooth touch.

Size: 1 KG
5KG
25 KG



Colours available

EP 1001 WHITE
EP 1002 YELLOW DC
EP 1003 CARAMEL
EP 1004 RED
EP 1005 RED VIOLET
EP 1006 BORDEAUX
EP 1007 BROWN
EP 1008 BLUE
EP 1009 BLACK
EP 1010 VIOLET
EP 1011 DARK BROWN
EP 1012 GOLD YELLOW
EP 1013 ORANGE
EP 1014 GREEN

Chemical / Physical properties

Characteristics: viscous liquid
Odour: characteristic
Storage Temperature: Keep container dry. Keep at temperature between 5 - 40°. Keep only in the original container.

EP2000 Series Matt



PU based Matt Edge Paint

EP 2000 are water based **Matt** edge paints designed to colour raw edges of belts, bags, wallets and shoes. The high quality of the raw materials and resins ensure high performances in terms of wet and dry rub-fastness and flexibility from -25°C to +55°C. The **EP 2000** can be applied by machine or by hand in one or more coatings without any adhesion problems.

The edges will be mat, round and full with a smooth touch.

The **EP 2000** series is available in two versions: standard and high viscosity.

Size: 1 KG
5KG
25 KG



Colours available

EP 2001 WHITE
EP 2002 YELLOW DC
EP 2003 CARAMEL
EP 2004 RED
EP 2005 RED VIOLET
EP 2006 BORDEAUX
EP 2007 BROWN
EP 2008 BLUE
EP 2009 BLACK
EP 2010 VIOLET
EP 2011 DARK BROWN
EP 2012 GOLD YELLOW
EP 2013 ORANGE
EP 2014 GREEN

Chemical / Physical properties

Characteristics: viscous liquid
Odour: characteristic
Storage Temperature: Keep container dry. Keep at temperature between 5 - 40°. Keep only in the original container.

Production Products

Edge Paint Series

EP5000 Series Matt



PU acrylic based Matt Edge Paint

EP 5000 are water based **Matt** edge paints designed to colour raw edges of belts, bags, wallets and shoes. The high quality of the raw materials and resins ensure high performances in terms of wet and dry rub-fastness and flexibility from -5°C to +65°C. The **EP 5000** can be applied by machine or by hand in one or more coatings without any adhesion problems. The edges will be matt, round and full with a smooth touch.

Size: 1 KG
5KG
25 KG



Colours available

EP 5001 WHITE
EP 5002 YELLOW DC
EP 5003 CARAMEL
EP 5004 RED
EP 5005 RED VIOLET
EP 5006 BORDEAUX
EP 5007 BROWN
EP 5008 BLUE
EP 5009 BLACK
EP 5010 VIOLET
EP 5011 DARK BROWN
EP 5012 GOLD YELLOW
EP 5014 GREEN
EP 5013 ORANGE

Chemical / Physical properties

Characteristics: viscous liquid
Odour: characteristic
Storage Temperature: Keep container dry. Keep at temperature between 5 - 40°. Keep only in the original container.

EP Metallic



EP Metallic are polyurethane-based edge paints designed to achieve full rounded edges with a metallic effect. Thanks to the high quality of raw materials, with the EP Metallic you can get high performance in terms of wet rubbing / Dry and high flexibility even at low temperatures from - 25 °C to + 55 °C. The **EP Metallic** can be applied by machine or by hand in one or more coatings without any adhesion problems.

Size: 1 KG



Colours available

EP GOLD
EP SILVER
EP PEARL
EP PINK GOLD
EP BRONZE

Chemical / Physical properties

Characteristics: viscous liquid
Odour: characteristic
Storage Temperature: Keep container dry. Keep at temperature between 5 - 40°. Keep only in the original container.

EP Fluo



EP Fluo is a water based polyurethane edge paint with fluorescent pigments.
EP Fluo is resistant to solvents and sun light.

Size: 1 KG



Colours available

EP FLUO BLUE
EP FLUO RED
EP FLUO ORANGE
EP FLUO YELLOW
EP FLUO PINK
EP FLUO GREEN

Chemical / Physical properties

Characteristics: viscous liquid
Odour: characteristic
Storage Temperature: Keep container dry. Keep at temperature between 5 - 40°. Keep only in the original container.

Production Products

Edge Paint Series

EP Reflex



EP Reflex is a water based polyurethane edge paint with a reflective effect.

EP Reflex can be applied directly on the raw edge, or as a final coat on an already existing EP.

Size: 1 KG



Colours available

EP REFLEX NEUTRAL

Chemical / Physical properties

Characteristics: viscous liquid

Odour: characteristic

Storage Temperature: Keep container dry. Keep at temperature between 5 - 40°. Keep only in the original container.

EP Filler



EP FILLER is a water based polyurethane product with a high dry content designed to achieve a smooth rounded edge on bags, belts and shoulder straps in leather, coupled leather and synthetic leather, even those that have thicker edges. **EP FILLER** can be buffed or brushed to close the pores of the rough leather, reducing the absorption prior to application of the EDGE PAINT colour from one of the following EP series 1000/2000/5000.

Size: 1 KG



Colours available

NEUTRAL
BLACK
WHITE

Chemical / Physical properties

Characteristics: viscous liquid
Odour: characteristic
Storage Temperature: Keep container dry. Keep at temperature between 5 - 40°. Keep only in the original container.

EP Sealer



EP SEALER is a water based emulsion of natural and synthetic polymers designed to obtain a smooth and round edge for bags or belts with materials like: leather, coupled leather and synthetic leather. **EP SEALER** can be smoothed by brushing and allows to close the pores and flatten the raw edge before colouring with the Series coloured EP 1000/2000/5000.

Size: 1 KG



Colours available

NEUTRAL

Chemical / Physical properties

Characteristics: liquid

Odour: characteristic

Storage Temperature: Keep container dry. Keep at temperature between 5 - 40°. Keep only in the original container

Production Products

Edge Paint auxiliaries

PU Fibre Glue



PU FIBER GLUE is a polymer particularly indicated to improve the adhesion of Edge Paint to Leather. It is a very good primer for raw edges before applying the Edge Paint finishing.

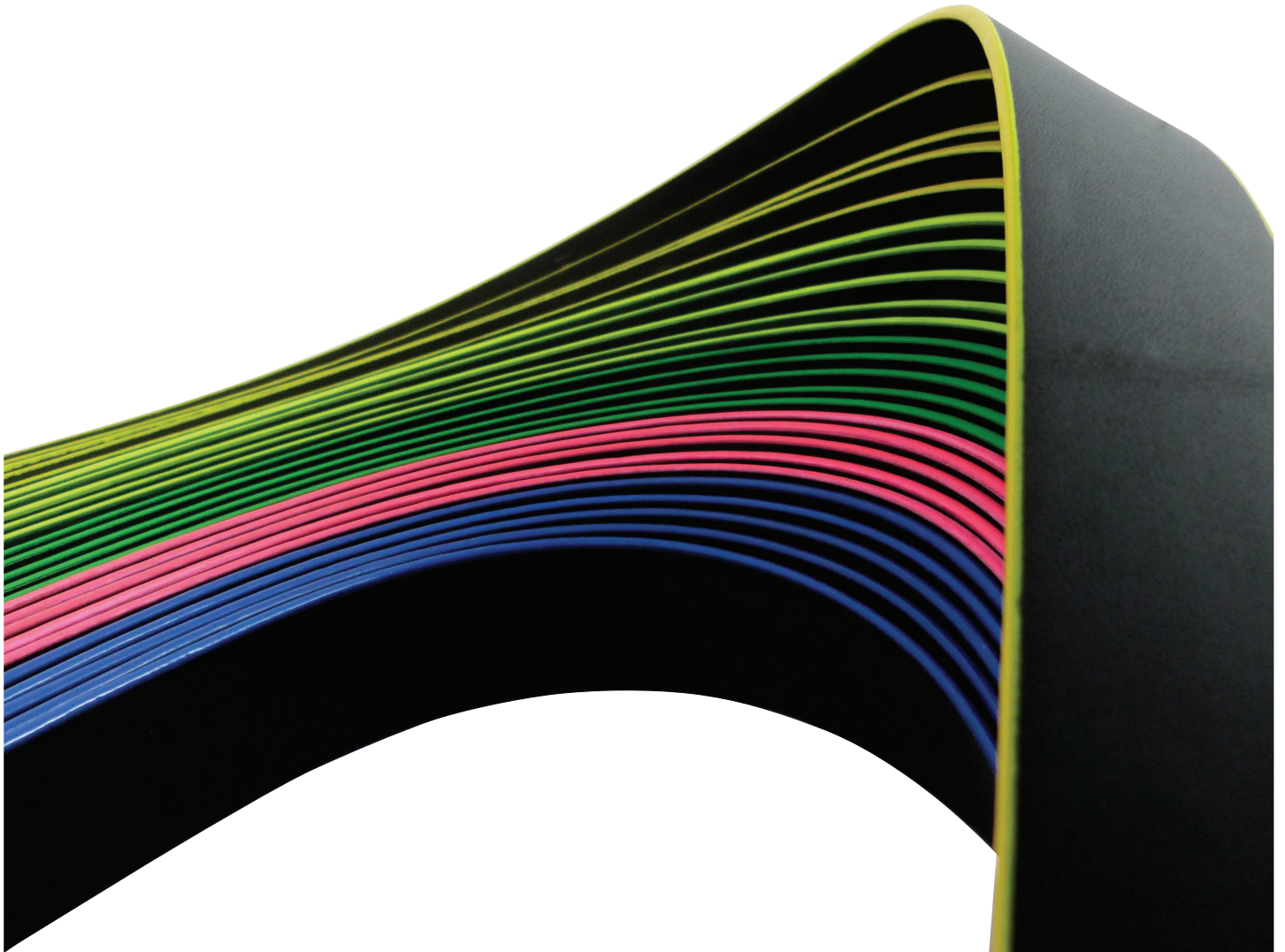
Size: 1 KG

Chemical / Physical properties



Characteristics: liquid
Colour: whitish
Odour: characteristic

Storage Temperature: Keep container dry. Keep at temperature between 5 - 40°. Keep only in the original container.



Production Products

Edge Paint auxiliaries

EP Paste



EP PASTE is a water based product with a high dried content designed to fill the small holes that form at the corners of bags where the leather is folded.

EP PASTE can be applied by hand with a stick and after proper dry time (usually around 15-20 minutes) it can be brushed or sanded before applying one of our Primers or Edge Paint from the following series: EP 1000, EP 2000 or EP 5000.

Size: 1 KG
5 KG



Chemical / Physical properties

Characteristics: paste

Odour: characteristic

Storage Temperature: Keep container dry. Keep at temperature between 5 - 40°. Keep only in the original container.

Production Products

Edge Paint auxiliaries

EP Anti Foam



EP Anti foam can be added to **EP** or **EP Primer** in order to eliminate eventual foam build up during the EP application. Normally a dosage of 0.2-1% of EP Anti foam in the finished product is sufficient.

Size: 1 KG



Chemical / Physical properties

Characteristics:	viscous liquid
Colour:	colourless
Odour:	characteristic
Storage Temperature:	Keep container dry. Keep at temperature between 5 - 40°. Keep only in the original container.

EP Thickener



EP Thickener increases the viscosity of EP. Normally a dosage of 0.3-2.0 % of **EP Thickener** in **EP** is sufficient.

Size: 1 KG



Chemical / Physical properties

Characteristics:	viscous liquid
Colour:	colourless
Odour:	characteristic
Storage Temperature:	Keep container dry. Keep at temperature between 5 - 40°. Keep only in the original container.

Production Products

Edge Paint auxiliaries

EP Thinner



EP THINNER is a specific blend of wetting and smoothness agents. We suggest that it is added to our **EP Series** and **EP Primer**, **EP Sealer** to adjust the absorption on the surfaces and the correct viscosity of the product. Normally a dosage of 0,5-5,0 % of thinner in the product is sufficient.

Size: 1 KG



Chemical / Physical properties

Characteristics:	liquid
Colour:	colourless
Odour:	characteristic
Storage Temperature:	Keep container dry. Keep at temperature between 5 - 40°. Keep only in the original container.

UnitersPro

Colour System

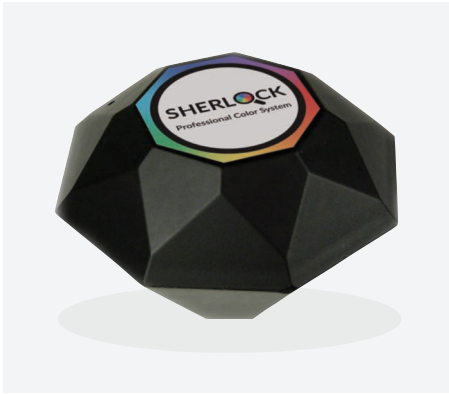
This innovative Edge Paint matching and dosing system is revolutionizing the way you handle custom coloured Edge Paint:

- Matches any colour from 14 base Edge Paint colours.
- Eliminates lead time completely for styling departments
- Mixes any quantity from 25 ml up to 1 litre.
- Easy to use.
- Fast and accurate dosing.
- Extreme precision up to 0,03g.
- Eliminates mismatches of samples with production batches as you communicate us the recipe you want.
- Eliminates need of colour cards as you make your own.
- Low maintenance.
- Reduces your stock of Edge Paint.



Sherlock Reader

"It's Elementary!"



The SHERLOCK READER is a device that provides a new revolutionary, versatile and powerful way to find a match between the colour reading and one of the thousands of colours available in the electronic memory.

Portable and convenient

The SHERLOCK READER is with you whenever you need it. It is lightweight with a rugged shell suitable for all work environments and has a powerful USB rechargeable battery that allows up to 300 readings or 6 months of standby time.

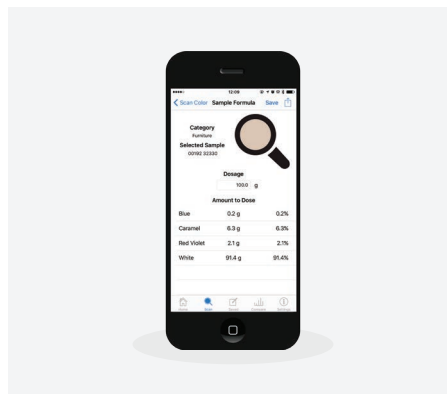
Easy and intuitive interface thanks to our dedicated APP for both iPhone and Android.

Adaptable and expandable

You can keep the reader always updated with the latest recipes. The APP allows you an easy synchronisation and the addition of new colour collections.

The SHERLOCK READER also has the possibility to help with filling the gap between the chromatic appearance and the physical colour, from the incoming batch material to outbound product shipments, within the APP you will find the section dedicated to Quality Control, where you can compare the colours in a technological manner.

The SHERLOCK READER has indeed been designed to provide stable colour comparisons for materials and products wherever colour control is important.



- Instant formula results with colour mixture dosage
- Online Formula Database
- iPhone and Android apps
- Small and compact reader
- No calibration needed
- Robust and resistant

Brushable Creams

Shine (SH-01W)



Patent Leather Cleaner

Shine is a water based product specially designed to clean, protect and restore the shine to patent leather, imitation leather, coated polyurethane and general pigmented leather. It can be used during production as it cleans the leather of blemishes and protects against marks and stains caused by skin contact.

Size: 150 GR
minimum 12pcs
1 KG
5KG



Colours available

Neutral

Chemical / Physical properties

Characteristics: cream

Colour: white

Odour: characteristic

Storage Temperature: Keep container dry. Keep at temperature between 5 - 40°. Keep only in the original container.

Brushable Creams

S-Cream



S-Cream is a water-based cream composed of natural and synthetic waxes characterized by its high smoothness and brushability, giving leather shoes a very nice and natural look. This cream can be used as a base application to seal the grain, followed by a glossing cream such as **L-Cream** or Bright Now. **S-Cream** can be applied on several different types of leathers such as soft nappa leather, vegetable tanning leather, full grain or embossed leather as long as they have a good absorption.

Size: 5 KG
30 KG
120 KG



Colours available

Neutral
Black
Brown
Dark Brown

Chemical / Physical properties

Characteristics: water based cream

Odour: characteristic

Storage Temperature: Keep container dry. Keep at temperature between 5 - 40°. Keep only in the original container.

Brushable Creams

L-Cream



L-Cream is a water-based cream composed of natural and synthetic waxes characterized by its high brushability, giving leather shoes smooth finish-Cream gives a very good shine with an excellent transparency. This cream can be applied in two coatings or can be used as second application after the **S-Cream** to achieve a more sealed, glossy and transparent look. **L-Cream** can be applied on several different types of leathers such as soft nappa leather, vegetable tanning leather, full grain or embossed leather but with good absorption.

Size: 5 KG
30 KG
120 KG



Colours available

Neutral
Black
Brown
Dark Brown

Chemical / Physical properties

Characteristics: water based cream

Odour: characteristic

Storage Temperature: Keep container dry. Keep at temperature between 5 - 40°. Keep only in the original container.

Brushable Creams

Top Cream



Top Cream enhances the original characteristics of the leather, giving a good degree of shine, soft-ness and touch. Thanksto its good covering power it is also able to mask the smallsuperficial defects of the finishing.

Size: 1 KG



Chemical / Physical properties

Characteristics:	Cream
Odour:	characteristic
Storage Temperature:	Keep at room temperature. Keep the container dry. Keep out of the reach of children.

Self Shining Creams

Bright Now



Bright Now is a hydro-alcoholic cream with a high gloss and an excellent transparent effect without losing the natural look of the leather.

Bright Now is easily brushed and polished without leaving streaks and gives the leather a very good sealing effect and a nice, silky touch.

Bright Now can be applied on several different types of leathers such as soft nappa leather, vegetable tanned leather, full grain and embossed leather as long as they have a good absorption.

Size: 1 KG
5 KG
30 KG



Colours available

Neutral
Black
Brown
Dark Brown

Chemical / Physical properties

Characteristics: waterbased cream

Odour: characteristic

Storage Temperature: Keep container dry. Keep at temperature between 5 - 40°. Keep only in the original container.

Fatliquoring Creams

Idrogrease



Idro Grease is a waterproof fat-liquoring product that can be applied using a sponge or a spray gun. As well as giving the leather a soft, oily touch is also provides an excellent waterproofing effect to the leather. Can be used on oiled or pull-up leathers to uniform the color, improve the softness, renew an oily touch and also remove scratches and lightened areas due to the work process.

Size: 1 KG
5 KG



Chemical / Physical properties

Characteristics: Whitish Liquid
Odour: characteristic
Storage Temperature: Keep at room temperature. Keep the container dry. Keep out of the reach of children.

Idrogrease Paste



Idro Grease is a waterproof fat-liquoring product that can be applied using a sponge or a spray gun. As well as giving the leather a soft, oily touch is also provides an excellent waterproofing effect to the leather. Can be used on oiled or pull-up leathers to uniform the color, improve the softness, renew an oily touch and also remove scratches and lightened areas due to the work process.

Size: 4KG



Chemical / Physical properties

Characteristics: Whitish paste
Odour: characteristic
Storage Temperature: Keep at room temperature. Keep the container dry. Keep out of the reach of children.

Dressings

FIX 181



Fixing agent

FIX 181 is a solvent based fixing agent available in a gloss and matt version. **FIX 181** creates a very fine film without greying. The product can be applied on nubuck and suede leather to fix the colour and to increase the rub-fastness of these leathers. It also can be used to stabilize the original finishing applied to the leather.

Size: 1 L
5 L
120 L



Colours available

Neutral

Chemical / Physical properties

Characteristics: solvent based liquid

Colour: colourless

Odour: characteristic

Storage Temperature: Keep container dry. Keep at temperature between 5 - 40°. Keep only in the original container.

Dressings

Sponge Dressing



Sponge Dressing is a water based dressing designed to obtain a very good gloss and transparency with a silky soft touch. **Sponge Dressing** is applied by sponge. We suggest cleaning the leather before applying the **Sponge Dressing** with a specific cleaner, such as Cleaner 333, or as second coat after the application of the specific cream such as **S-Cream**.

Size: 1 KG
5 KG



Colours available

Neutral
Black

Chemical / Physical properties

Characteristics: liquid

Odour: characteristic

Storage Temperature: Keep container dry. Keep at temperature between 5 - 40°. Keep only in the original container.

Dressings

Spray Dressing



Spray Dressing is a water based dressing designed to obtain a very good gloss with a silky, soft touch. **Spray Dressing** is applied by spray gun. We suggest cleaning the leather before applying the **Spray Dressing** with a specific cleaner, such as Cleaner 333, or as second coating after applying **S-Cream**.

Size: 1 KG



Colours available

Neutral
Black

Chemical / Physical properties

Characteristics: liquid

Odour: characteristic

Storage Temperature: Keep container dry. Keep at temperature between 5 - 40°. Keep only in the original container.

Water proofing agents

FL 01



Water proofing agent

FL-01 is a solvent based water proofing agent that can be used on most type of leather and fabrics.

FL-01 does not change the look or feel of the leather or fabrics, but at the same time you can obtain a very good water proofing effect.

FL-01 is also available in aerosol.

Size: 1 L
5 L
110 L



Colours available

Neutral

Chemical / Physical properties

Characteristics: solvent based liquid

Colour: characteristic

Odour: solvent

Storage Temperature: Keep container dry. Keep at temperature between 5 - 40°. Keep only in the original container.

Water proofing agents

FL 03



Not flammable water proofing revive

FL-03 is a non-flammable water proofing agent and a good nubuck and suede revive. It gives nubuck and suede a very soft touch and increase the depth of the colour without changing it. The product has a very good water and oil proofing effect. It is also suitable for aniline leathers and fabrics.

Size: 1 L
5 L
110 L



Colours available

Neutral

Chemical / Physical properties

Characteristics: solvent based liquid

Colour: colourless

Odour: solvent

Storage Temperature: Keep container dry. Keep at temperature between 5 - 40°. Keep only in the original container.

Water proofing agents

ProtectorW Conc



Water proofing reviver

Protector W Conc is a water based waterproofing agent for nubuck and suede leather as well as for fabrics. It has to be applied by spraying and 24-48 hours after application you will obtain the best performance in terms of waterproofing and anti soiling effect.

Size: 1 L
10L
25L
120 L



Colours available

Neutral

Chemical / Physical properties

Characteristics: liquid
Colour: whitish
Odour: characteristic
Storage Temperature: Keep container dry. Keep at temperature between 5 - 40°. Keep only in the original container.

Cleaners

Cleaner 333



Leather and Fabric Cleaner

Cleaner 333 is a leather and fabric cleaner suitable for almost all types of leather. **Cleaner 333** cleans general soiling without leaving rings after cleaning (also on fabric). This product can be used on delicate leathers, such as waxed, aniline, nubuck and patent leather.

Size: 1 L
5 L



Colours available

Neutral

Chemical / Physical properties

Characteristics: liquid

Colour: colourless

Odour: characteristic

Storage Temperature: Keep container dry. Keep at temperature between 5 - 40°. Keep only in the original container.

Cleaners

Rapid Cleaner S



Rapid Cleaner S is a concentrated cleaner suitable for pigmented leather, by-cast, PU and PVC leather and fabrics. It is important to check before general cleaning the resistance of the leather on a hidden part. **Rapid Cleaner S** cleans heavy soiling and stains without leaving rings.

Size: 200 ml
1 L
5 L



Colours available

Neutral

Chemical / Physical properties

Characteristics: liquid

Colour: transparent / yellowish

Odour: characteristic

Storage Temperature: Keep container dry. Keep at temperature between 5 - 40°. Keep only in the original container.

Cleaners

Shine (SH- 01W)



Patent Leather Cleaner

Shine is a water based product specially designed to clean, protect and restore the shine to patent leather, imitation leather, coated polyurethane and general pigmented leather. It can be used during production as it cleans the leather of blemishes and protects against marks and stains caused by skin contact.

Size: 150 GR
1 KG
5 KG



Colours available

Neutral

Chemical / Physical properties

Characteristics: cream

Colour: white

Odour: characteristic

Storage Temperature: Keep container dry. Keep at temperature between 5 - 40°. Keep only in the original container.

Cleaners

Mould Remover



Mould Remover efficiently removes mould and mildew from leather. It also eliminates the smell of mould.

Size: 250 ml
1 L
5 L
25 L



Chemical / Physical properties

Characteristics:	liquid
Colour:	colourless
Odour:	characteristic
Storage Temperature:	Keep container dry. Keep at temperature between 5 - 40°. Keep only in the original container.

Cleaners

Anti Mould RTU



Anti-Mould Rtu is a product used to remove and avoid formation of mould on leather. It can be applied by hand or using a spray gun.

Size: 1L
5L
25L



Colours available

Neutral

Chemical / Physical properties

Characteristics: colorless liquid

Odour: characteristic

Storage Temperature: Keep at room temperature.
Keep the container dry.
Keep out of the reach of children.

Cleaners

Spew Remover



Spew Remover is a product used to remove the natural oils that move from the inside of the leather to the surface, forming a milky film or haze. Applying Spew Remover with a cloth removes and prevents the spew from reappearing.

Size: 50ml
225 ml
1 L
5 L
10L



Colours available

Neutral

Chemical / Physical properties

Characteristics: liquid

Colour: colourless

Odour: characteristic

Storage Temperature: Keep container dry. Keep at temperature between 5 - 40°. Keep only in the original container.


Cleaners

Nubuck Cloth



Cleaning Cloth

Nubuck Cloth is an extremely efficient cleaner for removing surface soiling. It can be used on nubuck, suede and microfibre.

Size:  
sachet 1 pc
sachet 2 pc

Colours available

Neutral

Chemical / Physical properties

Characteristics: resin soaked cloth
Colour: whitish
Odour: weak
Storage Temperature: Keep container dry. Keep at temperature between 5 - 40°. Keep only in the original container.

Removers

Degreaser



This product is are for the removal of oil and grease stains from leather and fabric. It will extract the oils thanks to the combined action of solvents and absorbent powder.

Size:

Spraycan
200 ml



Chemical / Physical properties

Odour: solvent

Storage Temperature: Keep container dry. Keep at temperature between 5 - 40°. Keep only in the original container.

Removers

Glue Remover



This product removes glue, paint, marker and wax from leather and fabrics.

Size:

300 ml
1 L



Chemical / Physical properties

Characteristics:	liquid
Colour:	transparent / yellowish
Odour:	solvent
Storage Temperature:	Keep container dry. Keep at temperature between 5 - 40°. Keep only in the original container.

Removers

Super Remover



Super Remover eliminates marks from the pigmented leather and fabrics.

Size: 60 ml
1 L



Chemical / Physical properties

- Characteristics: transparent liquid
- Odour: alcohol
- Storage Temperature: Store at room temperature in a dry place. Keep out of reach of children.

Super Remover Gel



Super Remover Gel eliminates marks from the pigmented leather and fabrics.

Size: 50 ml
100 ml



Chemical / Physical properties

- Characteristics: transparent gel
- Odour: alcohol
- Storage Temperature: Store at room temperature in a dry place. Keep out of reach of children.

Removers

Ink Away



This product is for the removal of ink & lipstick from Protected (P) leathers. It is designed for removal of recent (3-5 days) ink on leather. It will not remove permanent markers from leather.

Size 8 ml HDPE stick
 minimum 24 pcs

 25 ml HDPE stick
 minimum 24 pcs

Size: 8 ml
 25 ml



Chemical / Physical properties

Characteristics: paste

Colour: whitish

Odour: weak

Storage Temperature: Keep container dry. Keep at temperature between 5 - 40°. Keep only in the original container.

Removers

Colour Transfer Remover



Colour Transfer Remover eliminates colour transfer on light leathers, such as blue jeans transfer, newspaper print transfer, fresh ballpoint, shoe polish, lipstick, chewing gum, permanent markers...

Size: 1 L
5 L
25 L
120 L



Chemical / Physical properties

Characteristics: liquid

Colour: colourless

Odour: characteristic

Storage Temperature: Keep container dry. Keep at temperature between 5 - 40°. Keep only in the original container.

Removers

Leather Odour Remover



Leather Odour Remover removes bad odours from any kind of leather.

This product does not cover the bad smell, but neutralises it.

Size: 1 L
5 L
25 L
120 L



Chemical / Physical properties

Characteristics:	liquid
Colour:	transparent / yellowish
Odour:	scented
Storage Temperature:	Keep container dry. Keep at temperature between 5 - 40°. Keep only in the original container.

Removers

Enzymatic Odour Remover



Enzymatic Odor Remover is a bio-based product designed to neutralize unpleasant odors. The odors are eliminated and not simply masked, as it eliminates the molecules responsible for the odor.

Size: 1 L
5 L
25 L
120 L



Chemical / Physical properties

Characteristics: slightly turbid yellowish liquid

Odour: scented

Storage Temperature: Keep at room temperature.
Keep the container dry.
Keep out of the reach of children.

Leather Softener



Water based softening agent

Leather Softener is a highly effective softener for leather, which thanks to its particular formula softens in depth the leather and prepares it for the following process. The product can be applied by sponge, by spray gun or by roller coater on both the flesh and grain side. Apply the product and leave to act for several minutes.

Size: 1 L
5 L
25 L
120 L



Chemical / Physical properties

Characteristics:	liquid
Colour:	colourless
Odour:	characteristic
Storage Temperature:	Keep container dry. Keep at temperature between 5 - 40°. Keep only in the original container.

Auxileries

Reptilux & Reptilux spray



Exotic Leather care

For use on Crocodile, Snake, Reptile Leather or other high-gloss leathers.
Cleans - gives brilliant gloss - protects.

Size:

60 ml tube

500 ml spraycan

1 L



Chemical / Physical properties

Storage Temperature: Keep container dry. Keep at temperature between 5 - 40°. Keep only in the original container.

Leather Protection Cream



Protector

Leather Protection Cream is a water based cream that provides a very good protection against alcohol, oily and water stains to aniline or pigmented leather. **Leather Protection Cream** applied by cotton cloth onto the leather items protects from general dirt, sweat and skin oils but at the same time it increases the softness of the leather and removes light surface scratches from waxy leather.

Leather Protection Cream is not suitable for nubuck and suede leather.

Size: 1 L
5 L
25 L
120 L



Colours available

Neutral

Chemical / Physical properties

Characteristics: liquid cream

Colour: whitish

Odour: scented

Storage Temperature: Keep container dry. Keep at temperature between 5 - 40°. Keep only in the original container.

Oleosa



Water proofing fatliquoring agent

Oleosa is a waterproof fatliquoring product that can be applied using a sponge or a spray gun. As well as giving the leather a soft, oily touch is also provides an excellent waterproofing effect to the leather.

Can be used on oiled or pull-up leathers to uniform the colour, improve the softness, renew an oily touch and also remove scratches and lightened areas due to the work process.

Size: 1 L
5 L
25 L
120 L



Colours available

Neutral

Chemical / Physical properties

Characteristics: liquid cream
Colour: yellowish
Odour: characteristic
Storage Temperature: Keep container dry. Keep at temperature between 5 - 40°. Keep only in the original container.

Wax On



Finishing agent

Wax On is a water-based product that when applied on waxy leather, pull up leather restores the normal softness, transparency and look on these type of leather. It can be applied by cotton cloth.

Size: 1 L
5 L
25 L
120 L



Colours available

Neutral

Chemical / Physical properties

Characteristics: liquid cream
Colour: yellowish
Odour: scented
Storage Temperature: Keep container dry. Keep at temperature between 5 - 40°. Keep only in the original container.

Leather Filler 1



Leather Filler 1 is a water-based filler for filling scratches or for restoring areas where the grain is missing. This filler is particularly flexible to enable use on leather goods that are very supple. Leather Filler may be coloured to the desired hue by mixing with colourants from the Touch Up series, up to a ratio of 10% of colourant.

Size:

60 ml
minimum 12 pcs



Chemical / Physical properties

Characteristics: paste

Colour: whitish

Odour: weak

Storage Temperature: Keep container dry. Keep at temperature between 5 - 40°. Keep only in the original container.

Touch Up Paint



Protector

Touch Up Paint is a water based coloured product; especially designed for repairing small to medium cracks and discolouration on pigmented leather.

Touch Up Paint restores the original appearance of the leather and provides long lasting protection and provides the treated leather with a good resistance. It is recommended for use in combination with other Leather Master products.

Size: 1 L
5 L



Colours available

TOUCH UP PAINT WHITE
TOUCH UP PAINT YELLOW DC
TOUCH UP PAINT CARAMEL
TOUCH UP PAINT RED
TOUCH UP PAINT RED VIOLET
TOUCH UP PAINT BORDEAUX
TOUCH UP PAINT BROWN
TOUCH UP PAINT BLUE
TOUCH UP PAINT BLACK
TOUCH UP PAINT VIOLET
TOUCH UP PAINT DARK BROWN
TOUCH UP PAINT GOLD YELLOW
TOUCH UP PAINT ORANGE
TOUCH UP PAINT GREEN

Chemical / Physical properties

Characteristics: viscous liquid
Odour: characteristic
Storage Temperature: Keep container dry. Keep at temperature between 5 - 40°. Keep only in the original container.

Auxileries

Colour Line Aniline



Water based aniline colours

Colour Line Aniline series are water based colours designed to re-new, re-colour or to give a stylish effects to the leathers such as crust, aniline leathers, with good absorption. Thanks to the formulation and the high quality of raw materials we can achieve high performances in terms of adhesion, wet and dry rub fastness and flexibility. **Colour Line Aniline** can be applied by sponge or by spray gun.

Size: 1 L
5 L
10 L
25 L



Colours available

CLA YELLOW DC
CLA RED
CLA BORDEAUX
CLA BROWN
CLA BLACK
CLA DARK BROWN
CLA LEMON
CLP CELESTE
CLA BLUE
CLA GREEN
CLA ORANGE

Chemical / Physical properties

Characteristics: viscous liquid
Odour: characteristic
Storage Temperature: Keep container dry. Keep at temperature between 5 - 40°. Keep only in the original container.

Auxileries

Colour Line Aniline No Bronze



Anti bronzing

Colour Line Aniline No Bronze is a water based product specifically designed to restore the natural look to aniline leathers with a bronzing problem due to the transpiration of the aniline leather that has not been fixed properly.

Size: 1 L
5 L
10 L
25 L



Colours available

Neutral

Chemical / Physical properties

Characteristics: liquid

Colour: whitish

Odour: characteristic

Storage Temperature: Keep container dry. Keep at temperature between 5 - 40°. Keep only in the original container.

Dyeing Colours

A-Colour series



Aniline effect Colours for shoe uppers

A-Colour is a water based dyeing product that thanks to its particular formula allows you to obtain a deep and intense 'aniline effect'.

A-Colour series is easily applied by sponge or spray gun. **A-Colour** is available in various colours that allow both an industrial and "artisan" process to create fashion effects and new articles.

Size: 1 KG
10 KG
25 KG



Colours available

A-Colour series is available in a numerous range of colours and the items treated with this colour series are suited to other industrial or manual process to obtain innovative and modern articles.

Chemical / Physical properties

Characteristics:	liquid
Odour:	characteristic
Storage Temperature:	Keep container dry. Keep at temperature between 5 - 40°. Keep only in the original container.

Dyeing Colours

Fix A aniline colours



FIX A Aniline Colours are solvent based aniline dyestuffs that can be used to uniform the colour shade on nubuck and suede. We can use **FIX A** Aniline Colours also on crust leather, waxy leather or other types of leather that have a good absorption, to create a stylish dark light effect.

Size: 1 KG



Colours available

FIX A BLACK
FIX A BROWN
FIX A RED BROWN

FIX A LIGHT BROWN
FIX A RED
FIX A GREEN

FIX A ORANGE
FIX A BLUE
FIX A YELLOW

Chemical / Physical properties

Characteristics: liquid

Odour: solvent

Storage Temperature: Keep container dry. Keep at temperature between 5 - 40°. Keep only in the original container.

Leather Goods Repairs

Kit



The **LEATHER GOODS REPAIR KIT** is a complete kit with all the most important products for repairing and resolving the typical problems found during both Quality Control and AFTER SALES service.



The kit consists of the following products:

Touch Up Paint (14 base colours)
Glue Remover
Cleaner 333
Rapid Cleaner S
Degreaser
Ink Remover
Ink Away
Colour Transfer Remover
Leather Protection Cream Loft
Leather Protection Cream
Shine
Mould Remover
Spew Remover
Odour Remover
Fl-o3S
Cla No-Bronze
Leather Filler
Nubuck Cloth
Fix 181 Gloss
Smart Glue

Recolouring Kit

Sherlock System



- A complete line of products created for professionals.
- Fast application and rapid drying time.
- Simple and accurate colour matching.
- Flawless touch and durability.



Sherlock Colour is a new water-based colour range, specifically designed for repairing small to medium damages on pigmented leathers. The use of high performance polymers, in a high concentration, assures reduced working time and better results.

Base colours available

WHITE
YELLOW
GOLD YELLOW
CARAMEL
ORANGE
RED
RED VIOLET
BORDEAUX
BROWN
DARK BROWN
VIOLET
GREEN
BLUE
BLACK

Contents

Base colours
Auxiliaries
Reader
Scale
Accessories
Instructions

UNITERS S.p.A

Via E. De Nicola, 1

36075 Montecchio Maggiore (VI) - ITALY

Tel: +39 0444 499099

Fax: +39 0444 499106

E-mail: info@uniters.com

UNITERS North America, LLC

West Palm Beach,

FL 33401 USA

www.uniters.com

